



## **CENTRAL BUILDING AUTHORITY**

### **2- & 3-BEDROOMS PLANS**

#### **DOCUMENTS REQUIRED:**

- Land Document (i.e., Land Certificate, Sale Agreement etc.)
- Google Location Map (showing exact location of the property with any nearby landmark)
- Proof of payment of the application fee

#### **TYPE OF BUILDING PLANS AVAILABLE**

**(\$250.00 for 2 Bedrooms & \$350.00 for 3 Bedrooms)**

- 2 Bedroom Timber
- 2 Bedroom Elevated Timber
- 3 Bedroom Timber
- 3 Bedroom Elevated Timber
- 2 Bedroom Concrete
- 3 Bedroom Concrete

#### **ROOF TYPES**

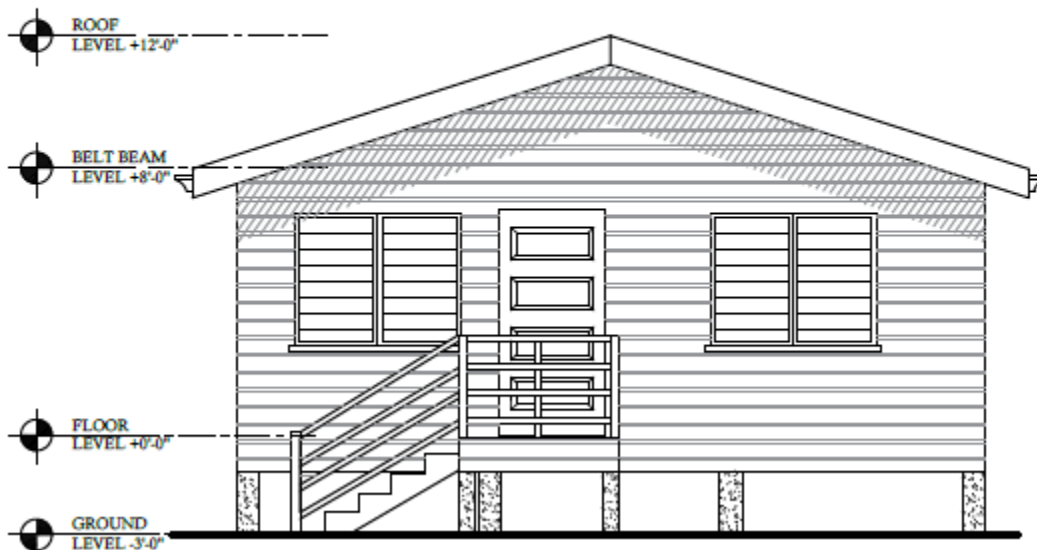
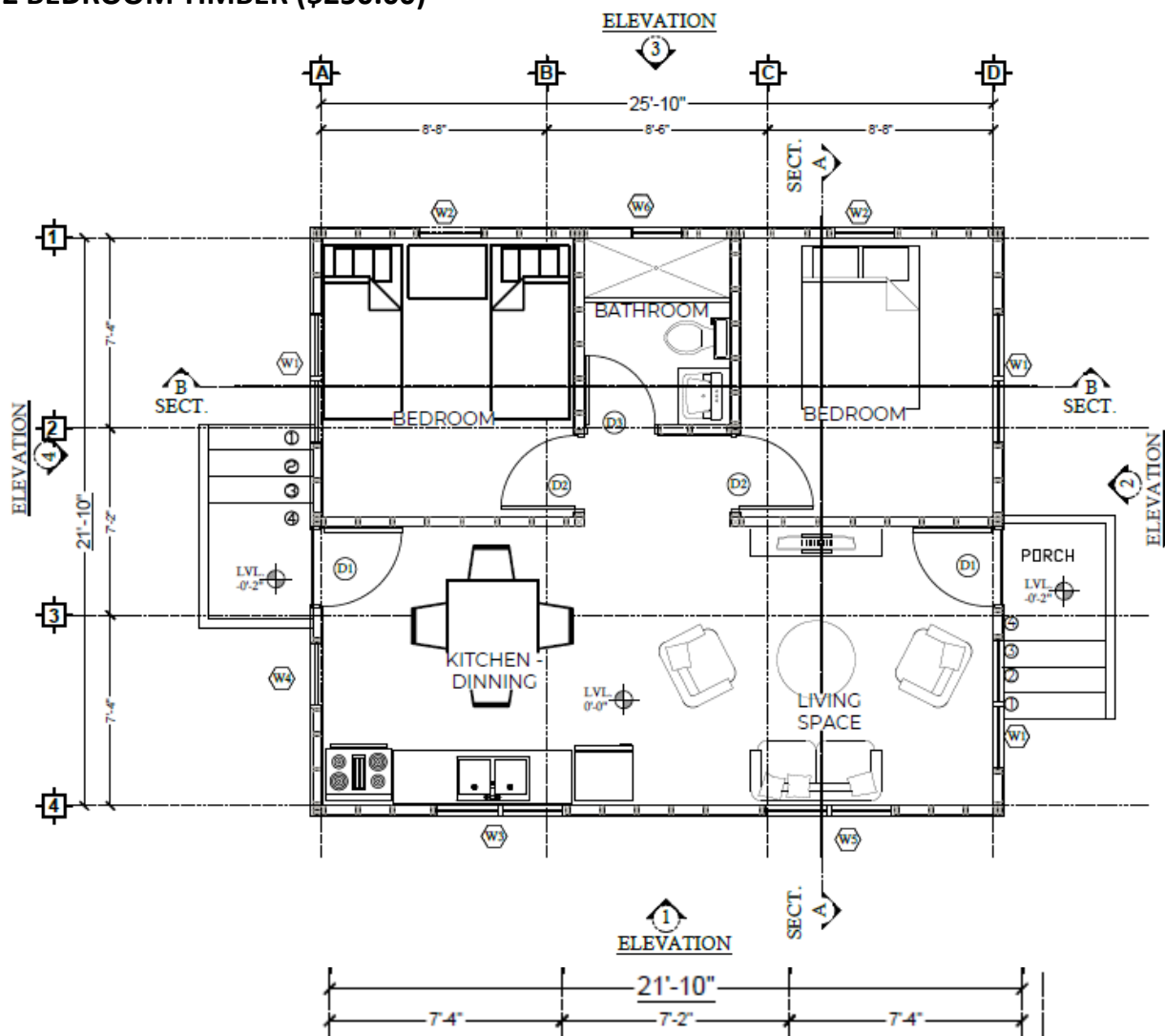
- Timber with zinc
- Concrete

#### **FOUNDATION TYPES**

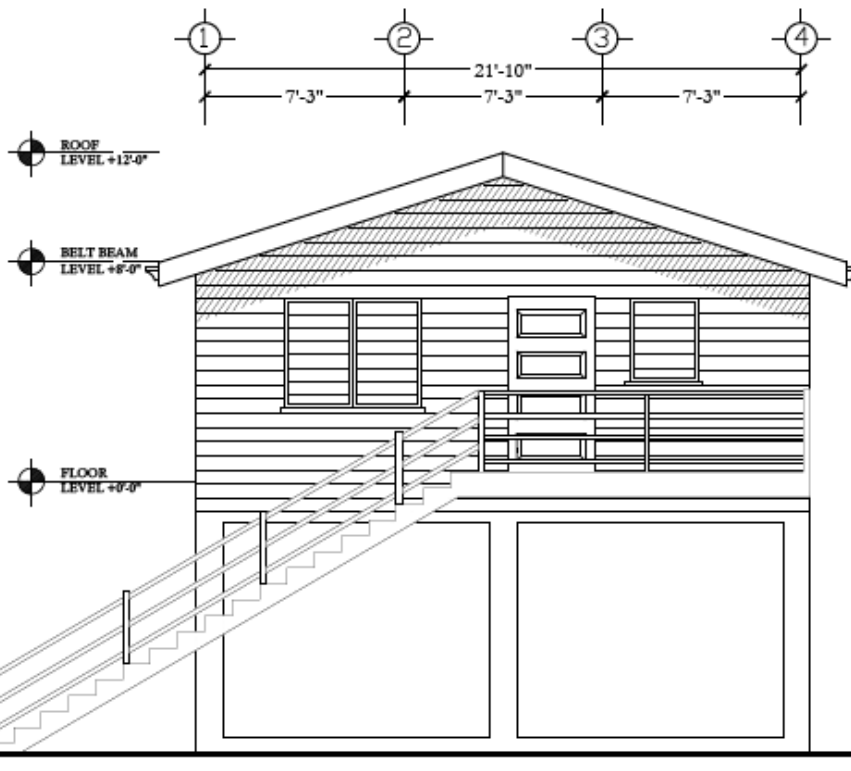
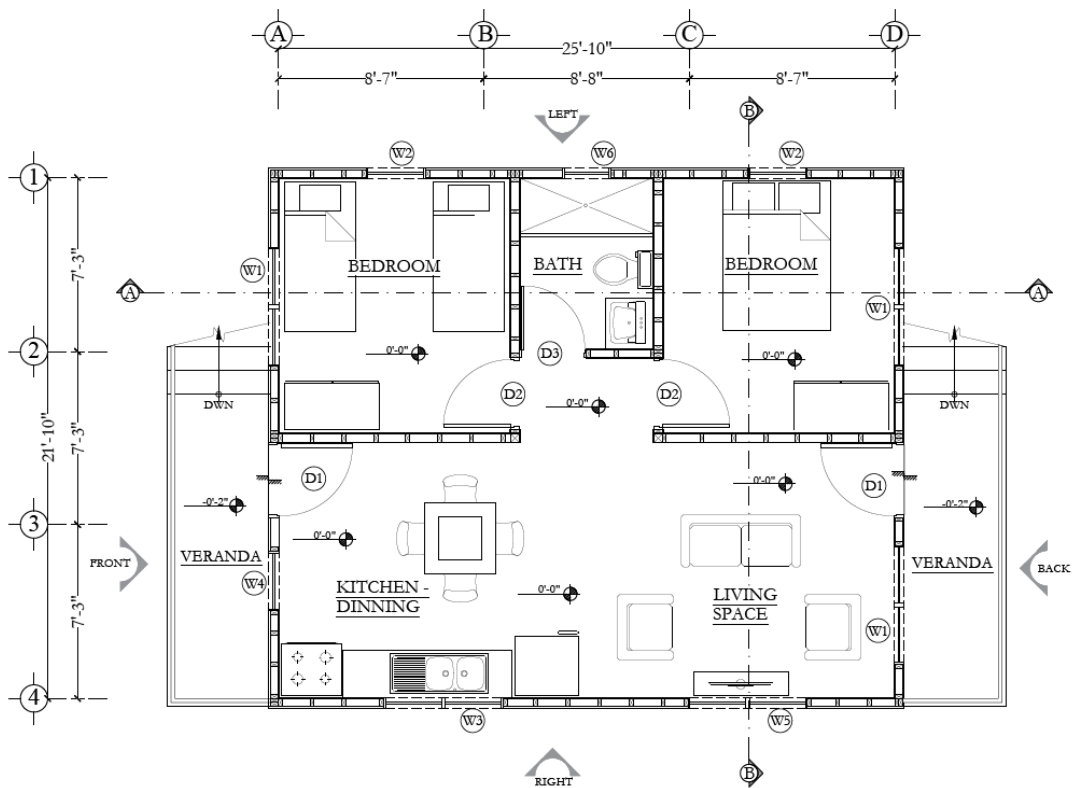
- Pile
- Strip Footing
- Pad Footing

*Check with your contractor to assist you with your selection.*

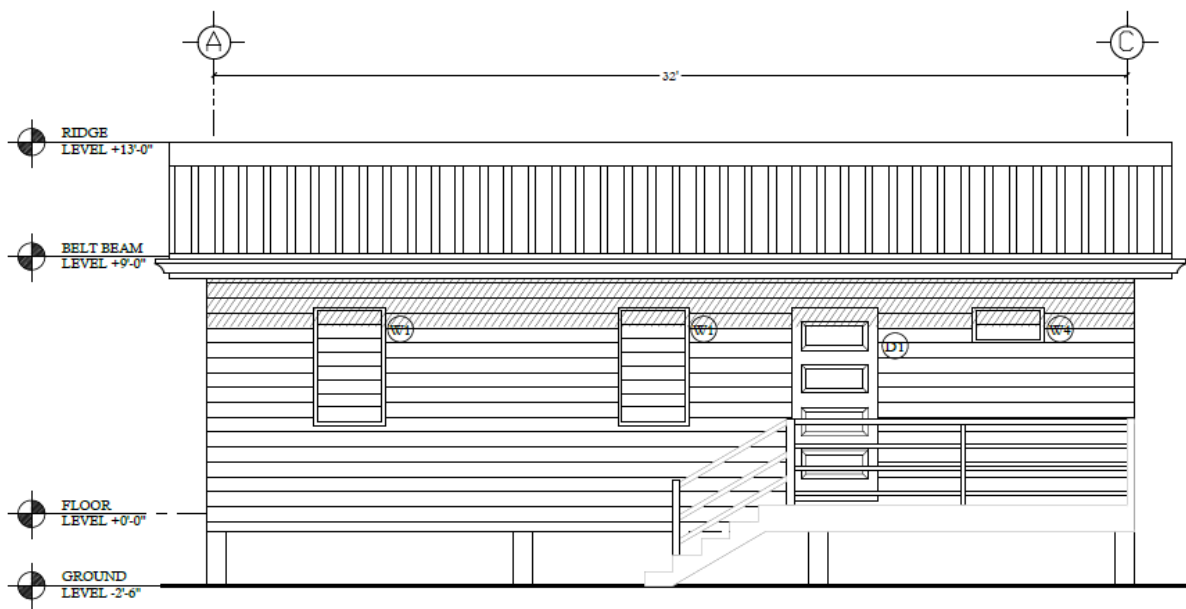
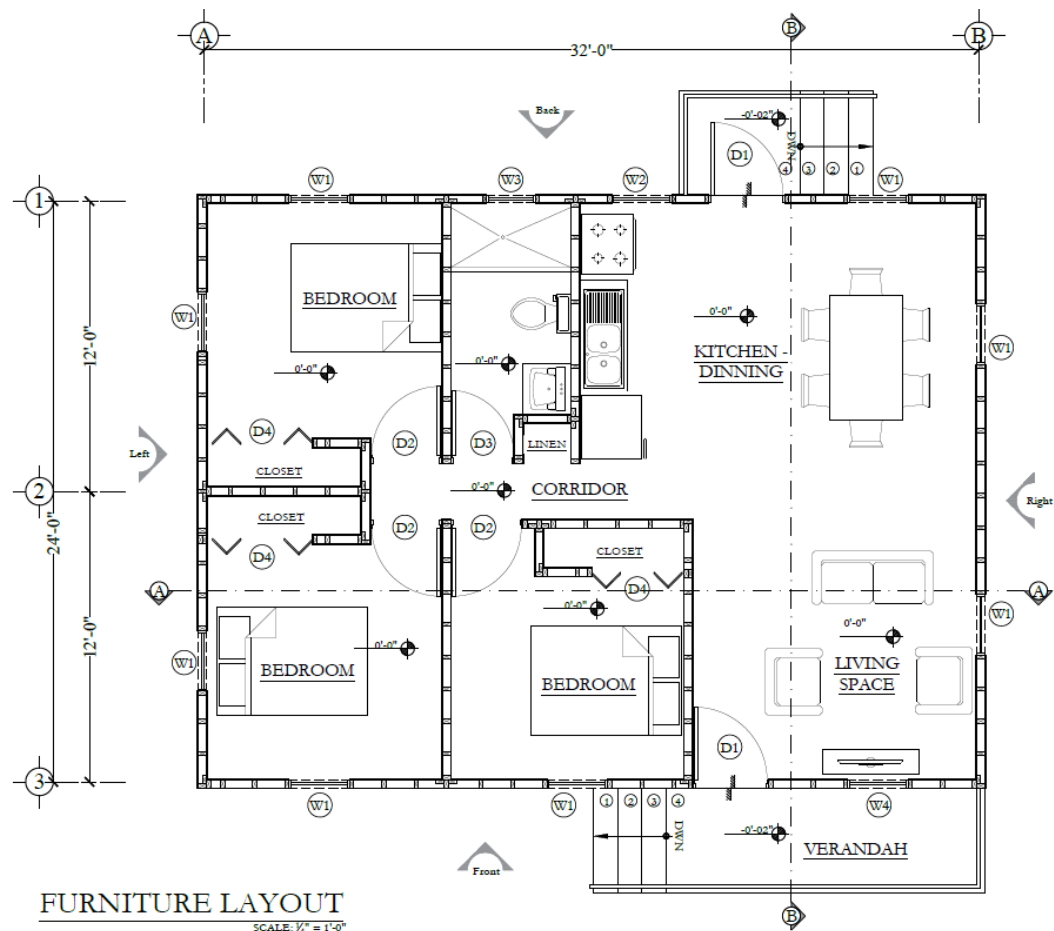
2 BEDROOM TIMBER (\$250.00)



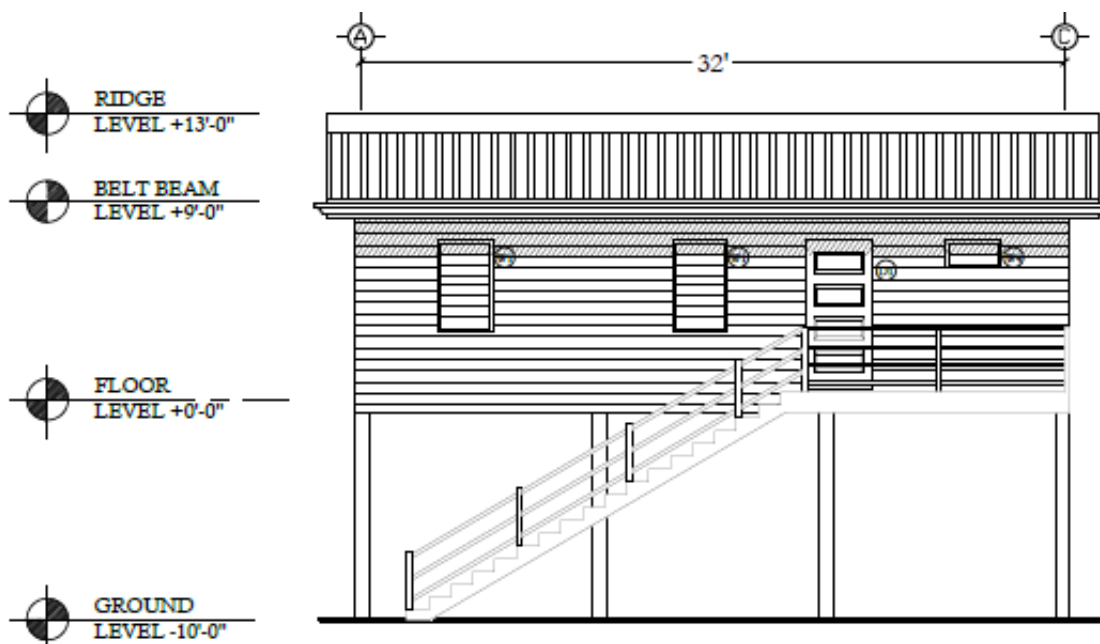
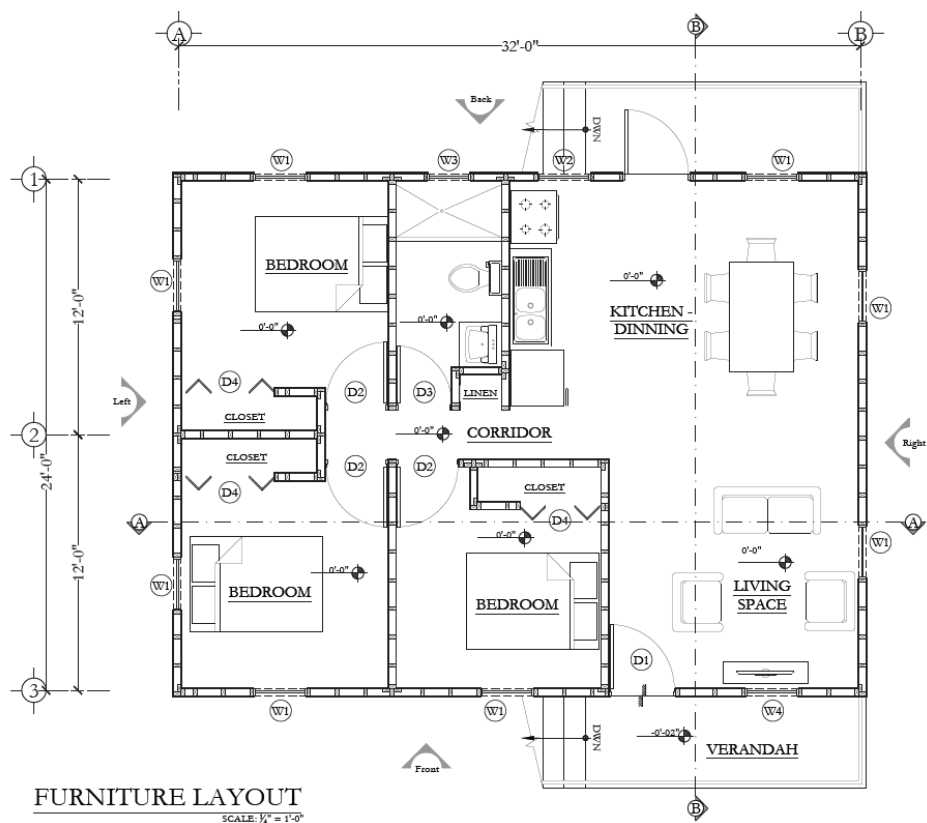
## 2 BEDROOM ELEVATED TIMBER (\$250.00)



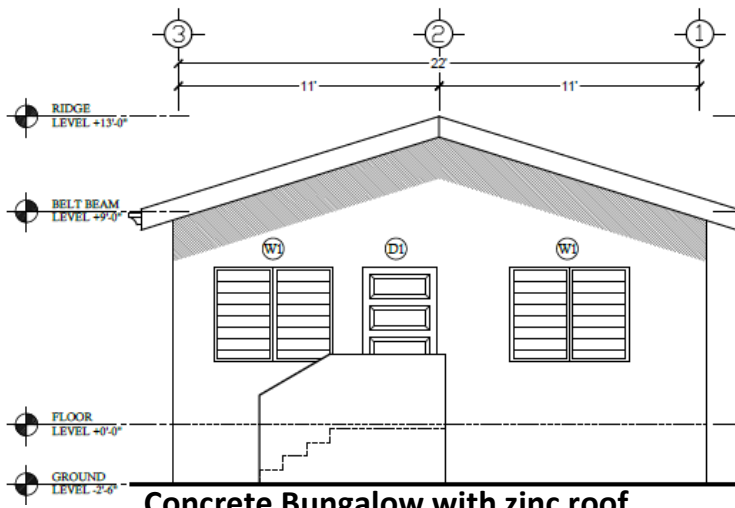
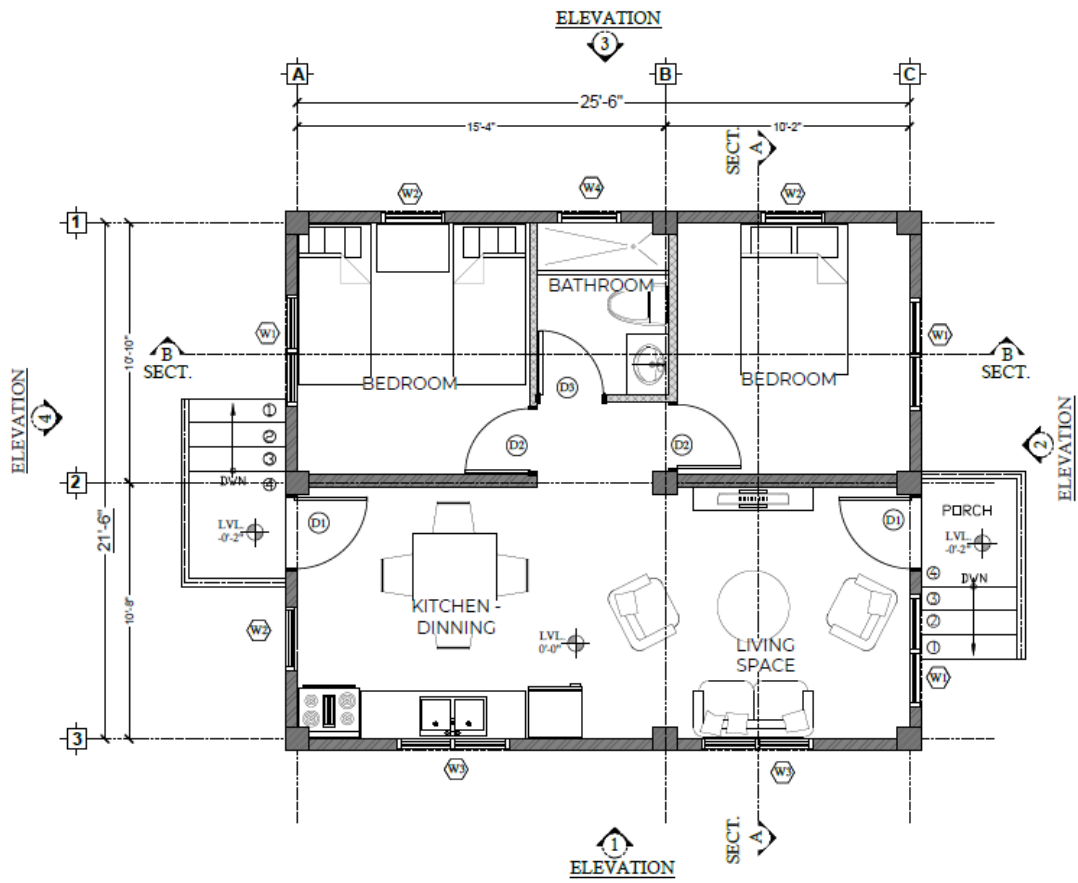
3 BEDROOM TIMBER (\$350.00)



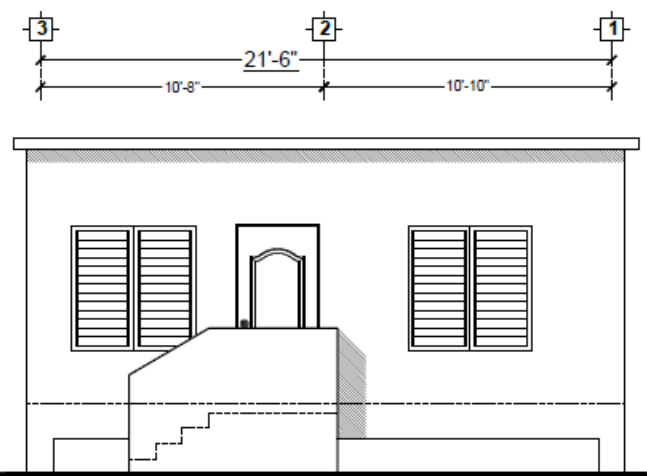
3 BEDROOM ELEVATED TIMBER (\$350.00)



2 BEDROOM CONCRETE (\$250.00)

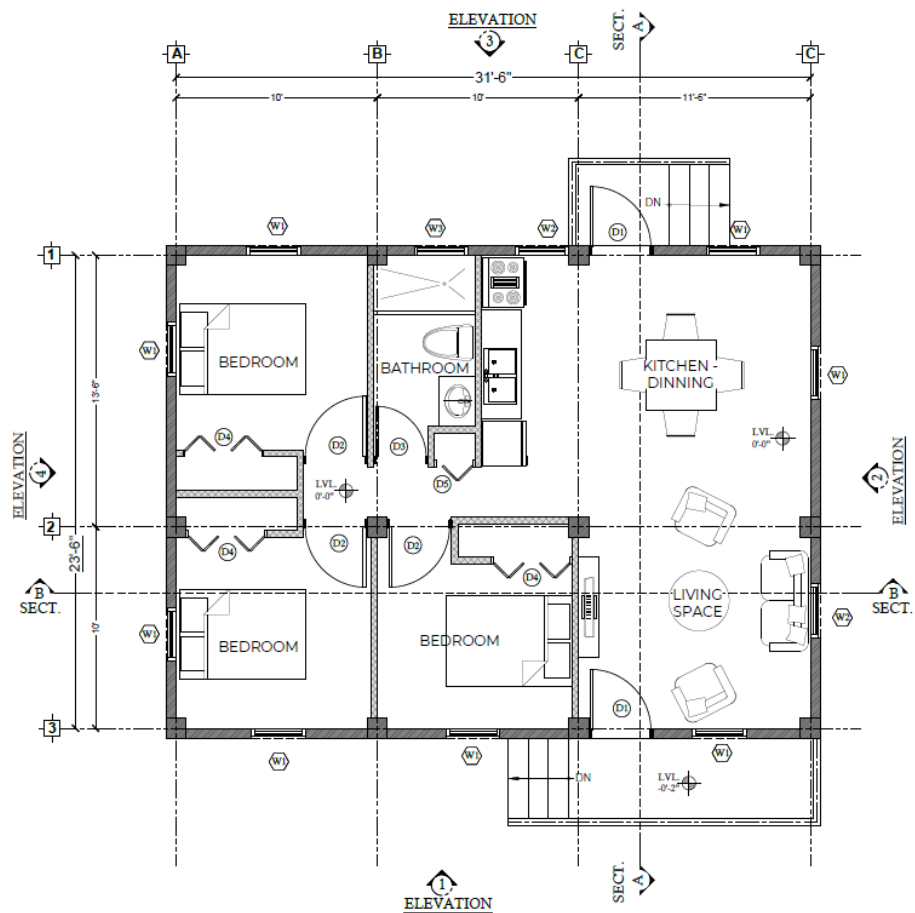


Concrete Bungalow with zinc roof



Concrete Bungalow with concrete roof

3 BEDROOM CONCRETE (\$350.00)



Concrete Bungalow with zinc roof

Concrete Bungalow with concrete roof